



# TEMPLE TIME

קול ישראל

The magazine of The Temple Beth Israel Community

JULY 2009 / TISHA B'AV EDITION TAMMUZ-AV 5769

**TWELVE**  
TBI Calendar 2010 | 5770



## INVITATION Calendar Launch and Art Auction

Sunday 2 August 2009  
Viewing from 2 pm  
Auction from 3 pm

Slome Hall  
Temple Beth Israel  
82 Alma Road St Kilda

Entry by donation



### 'Melodies of the Machzor'

featuring  
Jason Kaufman, cantorial intern  
The Temple Beth Israel Choir  
Kol Simcha  
Ruach  
and  
Temple Beth Israel's  
cantorial soloists,  
Bruce Levin, Rhondda Hall

Accompanists  
Joe Stupel & Eli Firestone

Sunday 16 August  
7 pm  
Temple Beth Israel  
76 Alma Road St Kilda

Tickets available from the TBI office or  
call 9510-1488

Rabbi Fred Morgan in conversation  
with Rachael Kohn

TBI  
Sunday 5 July  
3pm  
details on  
page 3





## FROM THE PRESIDENT BRIAN SAMUEL

### A community to be proud of

**A**s president you are expected to be proud of the activities that occur in and around the synagogue. Occasionally something happens that is a little out of the ordinary which makes you just a little more proud of the wonderful family we have at TBI.

A few Saturdays ago I was presiding at a Union of Progressive Judaism service held at TBI. We had a large number of visiting rabbis and presidents from congregations around Australia and the service was also well attended by our own members. At the conclusion of the service, when I stood up to make my weekly announcements, I was handed a piece of paper from the Shammas on duty which read as follows.

*The social justice group is looking for furniture (bed, fridge, table, chairs, blankets*

*and bedding) for an Ethiopian woman who has health issues, including poor eye sight and chronic pain. She has just been moved to new housing in Noble Park but has no furniture. If you are able to help please contact Kathy Earp with telephone numbers provided.*

I read the notice exactly as handed to me, expecting nothing other than having fulfilled a duty. The service finished a couple of minutes later and before I even had time to fold my tallit two members approached me. The first member indicated that he had a dining room table and chairs that he was happy to donate if we could arrange pick up. The second congregant informed me that a relative had passed away a few days ago and rather than send the contents to an opportunity shop the contents could be given to this lady in question.

At the conclusion of the kiddush I returned home and rang Kathy with the good news. Before I could even pass on my message she informed me that two other congregants had already phoned with offers of gifts. The apartment would now be fully furnished. I admit this completely blew me away.

Many of you will have seen how generous our congregation has been over the recent bushfires. This sort of request must occur on a daily basis right across Melbourne and one wonders what impact this has when the gift is made by a Jewish synagogue to a non-Jewish individual in need. When we set up our TBI Social Justice Group several years ago this philosophical question was raised at the time. Where is our priority? Is it with local Jewish people in need? Should the focus be on Social Justice in Israel or should it cover the local community in general? Fortunately for TBI the question has no single answer. Over a number of years a small group of interested volunteers have met every six weeks to discuss projects similar to the one related above. They don't seek publicity for their kindness nor do they expect any honour from the community. They are simply very

devoted Progressive Jews doing their bit to foster love and harmony with the general community. In their own small way they demonstrate that Jewish people don't just look after their own but believe their small contribution will help foster social justice throughout the community.

#### BOARD DISCUSSIONS

Our TBI Board has been very active over the last couple of months. We have altered the focus of our meetings to concentrate on the future and we are openly discussing a number of controversial topics. The Board initiates the ideas and working parties take them to flesh out the detail for presentation at later meetings. We are looking at topics like ritual life, buildings, education, youth and membership. I have set this high on the agenda each month so that the focus is on these topics in preference to reports.

Over the coming months I predict we will see a number of changes. We are not implementing change for change sake but more a reflection on the changing needs of our congregation. We will endeavour to keep you informed as we have in the past but more importantly we are encouraging members of our congregation who are not serving on our Board to become involved in these task groups. They are not committees but task groups which research, recommend and implement strategies. Some may only meet a couple of times. Others may need twelve months or more to properly prepare their brief. I believe these initiatives will cement our place as Australia's largest Progressive Jewish community. If you would like to become involved in any of these task groups or feel that that some things need to change for the better please feel free to email or call me.



#### Temple Beth Israel Inc. (No. A0040666N)

76-82 Alma Road St Kilda  
P.O.B. 128 St Kilda, Vic 3182, Australia  
T. (61-3) 9510-1488 F. (61-3) 9521-1229  
[info@tbi.org.au](mailto:info@tbi.org.au) • [www.tbi.org.au](http://www.tbi.org.au)

Publication of any/all material is at the discretion of the editor. Articles express the views of the author, not the Temple Beth Israel Board of Management. Articles in *Temple Time* may be reprinted but please acknowledge your source.

To receive *Temple Time* by email instead of, or in addition to, a conventional copy, please advise [info@tbi.org.au](mailto:info@tbi.org.au)

Editor/Design & Production [zoi.juvris@tbi.org.au](mailto:zoi.juvris@tbi.org.au)

#### Senior Staff

Rabbi Fred Morgan [rabbi.fred.morgan@tbi.org.au](mailto:rabbi.fred.morgan@tbi.org.au)

Rabbi Gersh Zylberman [rabbi.zylberman@tbi.org.au](mailto:rabbi.zylberman@tbi.org.au)

Rabbi Rayna Gevurtz [rabbi.gevurtz@tbi.org.au](mailto:rabbi.gevurtz@tbi.org.au)

Art Feinman (Executive Manager) [art.feinman@tbi.org.au](mailto:art.feinman@tbi.org.au)

Monica Hyams (Education Director) [monica.hyams@tbi.org.au](mailto:monica.hyams@tbi.org.au)

Rhonda Nirens (Exec PA to rabbis) [rhonda.nirens@tbi.org.au](mailto:rhonda.nirens@tbi.org.au)

Sue Silver (Community Projects) [sue.silver@tbi.org.au](mailto:sue.silver@tbi.org.au)

#### Va'ad (Executive)

Brian Samuel (President): [bsamuel@bigpond.net.au](mailto:bsamuel@bigpond.net.au)

David Arkles (Hon. Treasurer): [david.arkles@nexsell.com.au](mailto:david.arkles@nexsell.com.au)

Karen Wayne (Hon. Secretary): [carmyle@netspace.net.au](mailto:carmyle@netspace.net.au)

Sam Sharman (Vice President): [sam.sharman@bigpond.com](mailto:sam.sharman@bigpond.com)

Robert Hershman (Vice President): [thershan@iprimus.com.au](mailto:thershan@iprimus.com.au)

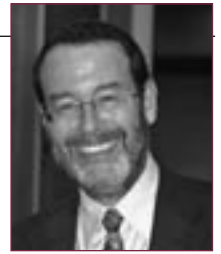
Roger Mendelson (Imm. Past Pres): [rghm@prushka.com.au](mailto:rghm@prushka.com.au)

**Temple Beth Israel acknowledges that we are assembled on land whose traditional custodians are the people of the Kulin Nation.**

**Temple Beth Israel is proud to be affiliated with the Union for Progressive Judaism.**

#### IN THIS ISSUE

A community to be proud of .....	2
On Fasting and hope .....	3
A call to parents .....	4
New hands at the reins .....	5
Mizmor Shir: A musical interlude .....	7
TBI community photo montage .....	8
The Progressive world .....	10
TBI community .....	14
May-June Calendar .....	15



## On fasting and hope

Say the word 'fasting' and Jews today will think of Yom Kippur. But there were times in Jewish history when fasting was almost a way of life. (Because fasting for religious purposes is not a popular pastime these days – though the fasting known as 'dieting' certainly is – I should quickly add that the fasting was balanced by the feasting that came with the festivals and days of simchah).

There were private fasts that individuals would undertake in times of personal difficulty, and fasts declared by the local community to seek divine deliverance from drought or famine or other natural disasters. Religious fasts are still a way of life in many parts of the world, especially in Asia and Africa.

Alongside these personal and local fasts were fasts that the rabbis of old proclaimed for the entire Jewish people, wherever they lived. In the main, these fasts commemorate an historical event of mammoth proportions for the Jewish people: the fall and destruction of the First and Second Temples in Jerusalem. These fasts are traced back to the prophet Zechariah, who looked forward to the day when our fasts would be transformed into days of joy with the redemption of Jerusalem. Perhaps it is because of modern Zionism and the establishment of the State of Israel – often viewed as the initial flowering of redemption – that these ancient fast-days have lost their pre-eminence in the Jewish calendar. Or perhaps it is because we just don't feel comfortable with ritualised fasting, 'mourning on demand', so to speak.

Yet these days of fasting remain in our calendar. Foremost among them are the Hebrew dates of 17 Tammuz (this year on 9 July) and 9 Av (or Tishah b'Av, this year on 30 July, with the annual VUPJ service held at TBI the night before). 17 Tammuz commemorates the initial breaching of the walls of Jerusalem, and it is a daytime fast; the 9 Av is the date on which the Temple(s) fell, and it is a full (25 hour) fast like Yom Kippur. These two dates are linked by a period of three weeks, which has become a time of semi-mourning for the Jewish community. No weddings, simchahs or celebratory communal events take place over this period. Furthermore, we are called upon to avoid any act that would require the *Shehecheyanu* blessing, specifically buying new clothes or other new possessions, or eating a fruit newly in season.

Rabbi Yitz Greenberg has made an astute observation regarding these traditional prohibitions. He says, 'The symbolic statement in these self-denials is: Who has the faith to go out and buy new things or plan for the future? Who has the heart to try to look good when the end is clearly drawing near?'

There have been moments in the past when the situation must have seemed hopeless for our people; when it appeared that the end was drawing near, the world seemed to be crumbling around us. In our own time, the Holocaust appeared to be such a time. Even today, the situation surrounding Israel and the survival of the Jewish people often appears pretty bleak. Yet, the Jewish people lives on – *am Yisrael chai!* Hope – *Hatikvah* – lives on in the Jewish heart. We continue to plan for the future, no matter how bleak the present may seem.

The period of three weeks between the two fast days of 17 Tammuz and 9 Av is a period of irony. During these three weeks we symbolically give up hope; but we do so in the knowledge that the story is not concluded, that there is 'a future and a hope' (as the prophet Jeremiah puts it, in words that we have inscribed on the Holocaust memorial in the foyer of our synagogue). The very fact that we are still here, able to fast as well as feast in commemoration of our Jewish past, belies our sense of hopelessness.

Looking around our community and reviewing its myriad life- and spirit-sustaining activities on behalf of our members, from learning opportunities for children and adults to the Friendship Club for seniors, from seminars on health and well-being to hospital visits and pastoral care, from Shabbat services to festival celebrations, from feasts to fasts, who can deny that at TBI there is a future and a hope?

*Fred Morgan*

25  
years  
Special Events

The President, the Board of Management  
and the Community of Temple Beth Israel  
joyfully invite you to celebrate the

25th anniversary of  
the ordination of Rabbi Fred Morgan  
Shabbat morning

4 July 2009 - 12 Tammuz 5769 at 10 am  
76 - 82 Alma Road, St Kilda

Please stay for a special kiddush after the service.

Rabbi Fred Morgan in conversation  
with Rachael Kohn

Sunday 5 July at 3pm

Slome Hall, TBI, 82 Alma Road, St Kilda

ABC broadcaster and author Rachael Kohn and Rabbi Morgan will discuss the changes that have occurred over the past 25 years in religious expressions and attitudes. There will be time for comments and questions from the floor, and light refreshments will be served.

Dr Rachael Kohn holds a PhD in Religious Studies from McMaster University and a Doctor of Letters from the University of New South Wales for 'services to the community in fostering religious understanding' through her broadcasts, public speaking and book, *The New Believers: Re-imagining God*, HarperCollins 2003. She has taught Religious Studies at Sydney University and in England and Canada and has produced documentaries for ABC TV's Compass: 'The Dead Sea Scrolls', 'Buddhism East and West', and 'Paws for Thought'.



To facilitate catering, please advise if you will be attending  
email [reception@tbi.org.au](mailto:reception@tbi.org.au) or call the office on  
9510-1488



**RABBI RAYNA GEVURTZ**

## A Call to Parents

Now is the time to create Sacred Community for our children

**W**hen Rabbi Joshua was still an infant, his mother used to bring him to the synagogue in his carriage so that his ears might become accustomed to the words of Torah. (*Jerusalem Talmud*)

What a beautiful image this teaching from the Talmud paints before our eyes. A parent striving to expose her tiny infant to something grand. The child who would become the great Rabbi Joshua, still in his infancy, already being immersed in the holy words of Torah. The ancient synagogue as a place that was open to everyone in our community, even those who had just begun their life's journey,

This teaching reminds us of our own modern day hopes as we strive to raise Jewish children. The hope that we will teach our children that there is more to life than meeting our daily material needs. The hope that they will know life also has a deeply spiritual dimension. The hope that our children's exposure to our ancient heritage of learning and sacred traditions will provide a spiritual framework for living. And the hope to find a community that is open and welcoming of young children and their families looking for a Jewish home.

It is truly a challenge in this age of such busy schedules to find time for anything that seems 'extra' in our lives. Extra tutoring, extracurricular activities, extra play dates...Parents are constantly juggling all the activities and trying to decide what is a must and what must go.

However, nurturing the Jewish *ne-shama* (soul) within each child is not just another activity to be ticked off. For, only when we make active Jewish living a family priority do we have a chance to create a strong sense of Jewish identity within our children.

The Va'ad Mishpacha is our TBI committee dedicated to finding ways to create a sacred community within our synagogue for our children to become immersed in our tradition. Together we discuss ways and opportunities to make Judaism come alive for our children. From Shabbat Mishpacha to festival activities, we endeavor to create

a Jewish home for our children here at Temple Beth Israel.

If you are a parent striving to nurture the Jewish spark within your child, please join in as we create sacred community with our synagogue. I invite you to join our Vaad Mishpacha. I invite you to join our Shabbat and festival Mishpacha celebrations. I invite you in for a conversation so we can talk about nurturing the Jewish souls in your family.

I look forward to hearing from you

*Rabbi Gevurtz can be contacted by phone on 9510-1488 or on email at [rabbi.gevurtz@tbi.org.au](mailto:rabbi.gevurtz@tbi.org.au)*



Join Rabbi Gevurtz  
**Wednesday 15 July, 7:30 pm**  
in a private home to  
welcome the Hebrew  
month of Av.

Each month the women of our congregation are invited to come together and rejoice in the new month with sacred learning, in depth conversation and, of course, a little nosh.

For more information and location, email [rabbi.gevurtz@tbi.org.au](mailto:rabbi.gevurtz@tbi.org.au) or call the office at 9510-1488.

## Yesh יש – Israel Trip



A three week educational experience in Israel from December 2009



This exciting venture is open to Jewish students in year 10 to join our King David School participants.

For more information and to register your interest, please contact **Shayndel Samuel** on (03) 8508 9606 or email at: [shayndel.samuel@kds.vic.edu.au](mailto:shayndel.samuel@kds.vic.edu.au)

THE KING DAVID SCHOOL



# The value of resilience



Monica Hyams

**I**n the preparation for a Bar/Bat Mitzvah advertisement for the Jewish News, I found myself asking what makes us different at TBI in terms of what we offer our students. The one aspect which sets us apart (of which there are many) is that we foster a sense of resilience in the students we teach.

Of course the standard *naches* every family derives from a Bar/Bat Mitzvah *simcha* is centred on the child who did so well/didn't look at all nervous/wow, s/he can do anything ...

So what is resilience? Is it just getting over the nerves and being able to perform or is it more?

Numerous examples close to our hearts are found in the B'nei Mitzvah experience. Find me a Jewish mother who doesn't feel a sense of guilt that she's making her child do a Bar/Bar Mizvah; who doesn't feel that it's *her* fault that s/he is so nervous and stressed by the whole thing, not to mention that it could have been much simpler if the 'other, easier option at another shul was chosen'.

It is the very belief in our children that they *can*, in fact, manage a whole range of experiences, expectations and responsibilities that inculcates a high level of resilience in many of our teenagers.

How we survive the tough times, how we respond to a range of stresses and challenges, these are the indicators of how resilient we are. The more we trust our children to deal with the challenges of life – with our support – the greater their capacity to learn, to adjust and approach difficulties with their own management tools, the better off they are.

Remaining positive or, at the least, feeling positive at the close of an ordeal or event is the key to success. How we reach that

point depends upon a myriad of factors. It has been suggested that a level of resilience is determined before we are born. What we do know is that we can teach people to become more resilient.

As was evident with the outpouring of help for the Victorian Bush Fire victims, people seek refuge in a strong sense of community. Having a spiritual life and a central community allows individuals to share feelings and know that they are not alone. The people who are motivated to help as much as possible within respective communities are often the same people who are heavily involved with their congregations, youth movements, schools and community organisations.

Learning to develop strategies fosters resilience. The stresses in life are best managed when there is another person who we can see cares about what is happening to us. There are so many people at TBI who do that on a daily basis in one form or another. What is so important for the teenagers within our community is that if they align themselves with a group of Jewish peers, their language of resilience deepens. Whether that group is Netzer, MATAN, the B'nei Mitzvah group or Junior Chazzanim, the value is found in the other teenagers of their age and the support adults who help facilitate these groups.

Feeling as though they matter – this acts like a trampoline for teenagers. The sense of worth, self respect and visions of the future, a bright future, it can all be cushioned within TBI's community. Life can be very stressful for a teenager and children as they grow and time is precious. Enabling them to learn lifestyle skills within a Jewish home and community is what we do. Let's work together to build a larger Jewish home and teach resilience together as we enable our children to feel competent and applauded.

## TBI Bnei Mitzvah program continues to evolve

You may have noticed that our bar and bat mitzvah are participating in different parts of the service than in the past.

This is all part of our new B'Mitzvotav program that complements our longstanding bar/bat mitzvah preparation.

More information about TBI's bar/bat mitzvah program can be found at [tinyurl.com/lcd6uo](http://tinyurl.com/lcd6uo).

## Matan Enrolments for Term 3 now open

At MATAN we have creative ways of reaching the youth and inspiring them.

MATAN is a school of strong character which gives students the security of knowing who we are and why we are here. Knowledge, learning and our wonderful teaching staff are central to encouraging our students to having fun being and feeling Jewish.

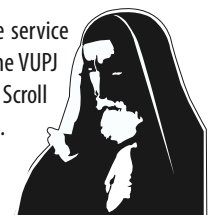
Call Monica Hyams on 9510-1488 or email [monica.hyams@tbi.org.au](mailto:monica.hyams@tbi.org.au)



## VUPJ Tisha B'Av

Temple Beth Israel  
Wednesday 29 July  
Shiur (study), 7 pm  
followed by Service, 7:30 pm

A moving and intimate service for all constituents of the VUPJ with readings from the Scroll of Lamentations (*Eicha*).



# New hands at the reins

Rebecca Silk

**T**emple Beth Israel's new Executive Manager, Art Feinman, took up his position just over a month ago as you read this, long enough to pick up the reins and start to get a grip on how all things TBI work.

Art describes himself as a new age business manager with an interest in systems and processes, as well as a desire to focus on synagogue life and people. Yet he started his career as a corporate accountant in New York. How did Art develop from an accountant to the skilled, compassionate manager who seems just right for the next era of management at TBI?

Art's resume outlines various accounting positions he held in the 1970s and 1980s in the banking, insurance and retail sectors. He was clearly good at what he did and took on ever more responsibility as he specialized in systems, process review and change management. But that is only part of the story.

In the 1990s Art started to do volunteer work helping out at a homeless shelter as an overnight aide. Then, together with others from his synagogue, the Town and Village Synagogue in New York, he initiated a successful program of Shabbat hospital visiting to the Beth Israel Hospital. He later did some voluntary accounting at the New York Open Centre, a new age holistic education centre.

In 1999, Art participated in a work scholar program at the Esalen Institute in California. The Esalen Institute is a nonprofit organisation devoted to humanistic education and the development of human potential. It is renowned for blending eastern and western philosophies and for encouraging students to use transformational and meditative practices for personal growth. The entire experience – rural environment, kitchen work, personal development group sessions and new friendships, was life-enhancing at a crucial time for Art.

He returned to a new position as financial systems administrator with a global firm, and brought with him a deeper empathy for other people as well as his profound commitment to Judaism.

Art came to Australia in 2002 to join his wife, Dr Gish New who took up the position as director of cardiology at Box Hill Hospital. Art finds Melbourne very con-



ducive and says that his family back home, including his 88 year old mum, are 'totally okay' with him being in Australia.

Art's first job in Melbourne was strategic business manager with the TIC group. Art also served on the board and as vice president of Kehilat Nitzan. He describes the experience as being integrally involved in all aspects of 'shulemanship', eg. everything from treasurer, to event management, logistical planning, writing grant proposals, securing premises and leading services. This has surely been a terrific training ground for Art, who sees no conflict in his membership in two great shules, affording the expanded opportunity of being part of the vibrant Melbourne Jewish community.

So for Art the coincidence of his wife seeing the advertisement for our Executive Manager in the AJN was 'almost miraculous' as the job seemed to be a confluence of his professional skills, along with his commitment to being a part of the growth of synagogue life. While he enjoyed his time in the corporate world, Art felt ready to work full time for a religious organisation. For him it was a mix of his profession, his personal values and his passions.

Art's goals are to play his part in keeping Temple Beth Israel a leading, vibrant centre for Jewish life. While Art is proficient at streamlining processes, he un-

derstands that this means building positive relationships with people while he is there in a supportive role. He knows only too well, that for change to happen people must be involved and buy in. He is also profoundly grateful to have such a wealth of experience among the administrative staff.

Art commended Alan Samuel's time as one of great growth and consolidation for the TBI community. Art envisages the community growing in new ways in the future, particularly by igniting the existing TBI inner flame and watching it illuminate the greater community. This means growth from the inside out. He would like to see people so excited about TBI community life that others will be eager to join us.

Art describes his spare time interests as music, running, meditation and going to shule. He is approachable, a great listener and is very keen to get to know and work with *everyone* at TBI. I am sure that we will not only enjoy getting to know him, but the results of those relationships will blossom in ways that we cannot yet imagine.

## MISHKAN T'FILAH Our new siddur is coming

Production is on track for the release of our World Union edition of Mishkan T'filah at the end of 2009.

Take a look at sample pages and read more about our region's edition via the TBI website at [tinyurl.com/bfb8ef](http://tinyurl.com/bfb8ef)



## Planning a musical interlude



Jason Kaufman

**A**s I sit and write this article, I have been in Melbourne for officially three days. It has been so wonderful seeing so many familiar faces and I have received so many beautiful welcomes. I am most surprised how natural it felt to drive again on the other side of the road!

I am eagerly looking forward to getting to work with all of the choirs of TBI. Last years *Mizmor Shir* concert was a tremendous success. It was not only incredibly attended, but each choir sang beautifully and displayed what a strong and vibrant musical culture lives here at Temple Beth Israel.

Last year's *Mizmor Shir* concert focused primarily on the music of Shabbat. Singing in the various languages of the Jews from around the world, the concert explored how world Jewry uniquely celebrate Shabbat with their own musical traditions and sounds.

Following in this tradition, this years *Mizmor Shir* concert will continue to explore the musical heritage of Jews around the world through not only their Shabbat

music, but their High Holiday music as well. Showcasing modern interpretation of *Untane Tokef*, *Hin'ni*, *Esa Enai*, and *L'shana Tovah Tikatevu* for example, *Mizmor Shir* undoubtedly be an eye-opening beautiful journey through the musical traditions of the Jewish people.



**There is still time to join one of the many choirs at TBI. Call the TBI office to see which choir fits you best!**



## Rabbi Morgan's 25 years of smicha

Monica Hyams

**M**ore than a quarter of a century ago, Rabbi Morgan nominated the rabbinic mate as his vocation. For more than twelve years, his values have steered our direction forward at Temple Beth Israel with clarity and harmony. Rabbi Morgan is imbued with the highest values of his profession and our faith. He works with an exceptionally high level of understanding of his community and a remarkable dedication to the rabbinate. Now that I am in a day to day working environment with him, I can see how Rabbi Morgan moves beyond that notion of working together and encourages people to take ownership of TBI's progress.

The roles of the rabbi are varied and numerous. The Pulpit Rabbi is Teacher, Scholar, Officiant, Counsellor and our representative in the community. The rabbi inspires us and directs us.

It is an overwhelming and endless list and a role which constitutes the rabbinic way of life. It is no wonder that the rabbis who have served TBI have changed our lives. We have been changed and challenged by them: and they by us.

The rabbi's role is much like that of the parent who provides us, their children, with a constant supply of care, concern and

commitment to our welfare. The rabbinate is such a demanding profession because the rabbi is constantly being judged by others. Consider the ways we have all changed under the leadership of the rabbis who have served TBI. Certainly TBI has changed: we are an important *kehillah* (community) with a membership and programs any community would envy.

Rabbi Morgan leads the professional team so that we can answer the needs of TBI members and we continue to grow, both in numbers and in qualitative terms. As members of his community, we are all

responsible for steering the direction of this community. Are we active as congregants in facilitating and assisting Rabbi Morgan in his work? Is the covenant between us strong enough because of the work we actively do to make each of our lives content and fulfilled?

Rabbi Morgan's values have steered our direction forward with clarity and harmony. Having been ordained a quarter of a century ago, it is clear that he has not wavered from his primary professional foundations. Working together is, and always has been, Rabbi Morgan's signature practice. Working with his staff; congregants; external communities or governing bodies, Rabbi Morgan does so in partnership. We all own the aims, the goals, the difficulties, *simchas*, losses, the projects. He encourages all to have faith, not only in ourselves and our faith, but with each other.

For 25 years Rabbi Morgan has encouraged us to be more and to do more. From birth to death, from *simcha* to mourning we have enjoyed the *neshamah* (soul) that has been Rabbi Fred Morgan.

### Take a seat

Two of our regular participants in our Wednesday Knitting Circle enjoyed one of our two new benches, installed thanks to the generosity of the friends of Joseph Harouche, and that of his brother, Daniel Harouche of Manchester, UK. One bench has been placed in the front foyer courtyard and the second will be installed at the very front of the TBI grounds outside the gates.

The dedication reads: *'In memory of Joseph Harouche - a loyal & dedicated friend.'*



### Jordan Brown represents Australia in soccer



Young TBI member Jordan Brown returned recently from representing Australia in the 2009 Asian Football Confederation under 13 Boys Festival of Football in Sabah, Malaysia.

Jordan, who will celebrate his bar mitzvah at TBI in August, has been playing soccer since he was about five.

Ten teams from eight countries competed – Malaysia, Philippines, Laos, Cambodia, Vietnam, Myanmar, Singapore and Australia – and each team played a 30 minute match against another country (up to three matches each day over four days in tropical heat and humidity). The emphasis was on giving the kids the experience of international competition. The Australian teams won quite a few matches, lost a couple and drew a couple. Their skill level was very high against skilled competition.

The Australian squad of 22 was asked to vote for the best Australian player over the whole competition and they chose Jordan. Pretty good for a little guy who had his nose broken about 4 weeks ago (he still headed the ball).

Mazal tov to Jordan, and his parents, David & Nicole Brown, and grandparents, Lin and Rosie Matthews

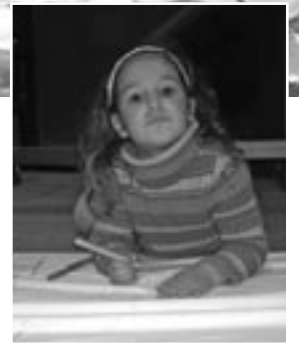


### Shavuot at TBI

The TBI community celebrated the festival of Shavuot with services and programming for everyone. Families with young children painted some wonderful Shavuot decorations, ate ice cream mountains and enjoyed stories and songs with the rabbis.

Tikkun Leyl Shavuot was ushered in with some mellow socialising, wine and cheese, a festival service for Erev Shavuot and then a fascinating discussion ensued, with presentations from our rabbis on the how we make choices in the our lives from a Jewish perspective. The next morning's Shavuot shacharit service was joyous.

Congratulations to Nicole McIntosh whose cheesecake won first prize, a gift voucher courtesy of **The Sunflower Bookshop**, at our annual cheesecake competition.



### TBI hosts JewishAid Sudanese integration

Temple Beth Israel hosted a group from the Sudanese community on Sunday 31 May, when JewishAid Australia invited mothers and children to a special lunch to meet counterparts in the Jewish community.



Rabbi Morgan was on hand to greet them all and welcome them to our community.





Photos courtesy of Joe Lewit

### Love Stories of Jerusalem

TBI celebrated Yom Yerushalayim with style on 17 May, as our VUPJ shlichah, Dana Bar Zuri, led us on a wonderful, romantic journey through Jerusalem using music and very clever multi-media presentations.

At each stop, she told us a 'love story' relevant to the location, weaving stories that kept us enthralled and wanting more. Dana is a registered Israeli tour guide. Her deep love of the city was obvious, together with the depth of her historical and cultural knowledge. It was a wonderful journey, presented with flair, passion and humour. Next month in Jerusalem, for me! ~ MARION LUSTIG



### Women's Rosh Chodesh Group

Established by Rabbi Rayna Gevurtz this year, the Rosh Chodesh group meets monthly to mark the new moon with gentle study and reflection, a little nosh and warm camaraderie. The women meet in private homes and the group warmly welcomes new participants who are members of TBI.

Interested women can contact Rabbi Gevurtz for more information and the address for the next gathering.

Above: Amanda Walker-Koronczyk, Maria Platt, Sheryl Cardozo, Ziona Zylberman and Rabbi Rayna Gevurtz

### Alan Samuel retires

The TBI family gave Alan Samuel a very warm send off on Saturday on 30 May, when the former Executive Director retired after 15 years at the rudder.

Former TBI President Kathy Kaplan and her extraordinary organisational skills ensured everything ran smoothly, with fabulous food and presentations by many individuals across the Progressive community – former Presidents, TBI staff, Board members and former Board members, representatives of the VUPJ, UPJ and The King David School, and many TBI members who lauded Alan with warmth and sincerity.

Top: Alan & Dianne during Havdallah.

Bottom left: Kathy Kaplan

Bottom right: Stephen, Alan, Dianne & Michael Samuel



Zachary Brendan Mitchell, new grandson for Rhonda and Jeff Nirens. Rhonda is Executive Assistant to the rabbis. Please send us photos of new arrivals in your family!





Temple Beth Israel  
Host and Hostess Luncheon  
proudly present

Lord Mayor of  
The City of Melbourne  
Robert Doyle



Wednesday 8 July  
Slome Hall, Temple Beth Israel  
82 Alma Road, St Kilda  
under the patronage of Lady Anna Cowen

All guests must be seated by 12 pm  
Fully catered sit down lunch, two courses with wine,  
tea/coffee to follow  
Guest \$35 Hostess \$45 / Patroness \$75  
Limited seating so please book early  
Bookings and enquiries with Sue Silver 9510 1488

## ROBERT DOYLE

Robert is Chairman of the Melbourne Hospital Foundation and a Trustee of the Shrine of Remembrance. He is an Ambassador for Odyssey House, a drug and alcohol abuse rehabilitation facility and an Ambassador for SecondBite, an organisation committed to making a positive difference by sourcing fresh food that would otherwise go to waste and distributing to the disadvantaged.

A Member of Victoria's Parliament for 14 years, Robert was Leader of the Opposition and Leader of the Liberal Party. Robert has extensive experience of regulatory, legislative and legal frameworks, as well as all aspects of public policy.

## Progressive news from Israel

### ISRAELI HIGH COURT RULES IN FAVOUR OF EQUALITY FOR REFORM AND CONSERVATIVE JUDAISM

On 19 May 2009, the Israeli High Court of Justice awarded equal funding to Reform and Conservative Jewish conversion programs. The Israel Religious Action Center (IRAC), the legal advocacy arm of the Reform Movement in Israel, originally filed this petition in 2005 against the Immigration Absorption Ministry for discrimination and today the Supreme Court agreed.

The Court noted that most converts in Israel immigrated by the Law of Return, but are not Jewish according to halacha, traditional Jewish law. They wish to convert in order to embrace their Jewish identity and to become more integrated into Israeli society, a goal achieved in conversion programs of all Jewish streams.

The Court called the State's practice of favouring only one Jewish stream discriminatory and contradictory to the State's responsibility of ensuring freedom of religion: 'The duty of the State to pluralism is not only a passive duty, but an active one as well.' The court also cited their 2002 ruling that 'Jews in Israel cannot be seen as only one religious sect.'

The verdict in this case calls for all private non-Orthodox conversion programs to be reimbursed retroactively for the years 2006-2009 and for all future funding to be given equally to conversion programs of all Jewish streams.

The Knesset Immigration, Absorption and Diaspora Affairs Committee held a stormy debate in early June over whether or not the state is implementing the High Court of Justice ruling on fund non-Orthodox conversion programs.

Member of Knesset Shlomo Molla emphasized, 'It cannot be that the Israeli taxpayer is funding only one type of conversion. Religious pluralism is a foundation stone of any democratic state. The state must therefore view all of the streams of Judaism as equals and the Immigrant Absorption Ministry must carry out the High Court ruling to the letter of the law.'

Taken from [www.irac.org](http://www.irac.org)

## TBI SOCIAL NETWORK

### DROP IN & CHAT/CRAFT CIRCLE @ TBI

Conversation, light refreshments, BYO tabletop games or join our knitting circle. Second and fourth Wednesday of the month, **8, 22 July, 12, 26 August at 10:30 am.** \$2 for refreshments.

### LIVING WITH DEMENTIA SUPPORT GROUP

Meeting every six weeks or so, offers companionship, support and provides helpful information to carers. **Monday 3 August at 7:30 – 9 pm.**

### VA'AD MISHPACHA

Join *Va'ad Mishpacha*, a group dedicated to expanding and enriching our family programming. Call Rabbi Gevurtz on 95101488 or [rabbi.gevurtz@tbi.org.au](mailto:rabbi.gevurtz@tbi.org.au)

### YOUNG TBI DINNERS

Join a diverse group of younger TBI members on the fourth erev Shabbat monthly for a Shabbat meal. **24 July & 28 August.** Check Young TBI group on Facebook.

### FRIENDSHIP CLUB

Entertainment & social interaction on the first and third Wednesday each month. 11am to 1:30pm. \$8 includes lunch & raffle ticket.

**1 July** An afternoon of light operatic classics featuring soprano, Frederica Cunningham, baritone, Chris Rickerby and piano accompanist, Tom Williams

**15 July** John Roberts is a piano-man with a voice and will delight us with a repertoire of music and song that will give nostalgia a new meaning.

**5 August** Stiletto Sisters. This dynamic, internationally acclaimed trio led by Judy Gunson has just returned from Prague and will enthrall us with Klezmer, Gypsy and a host of other music.



# Improving relations with Israeli Arabs

John Hillel

The TBI Social Justice Group recently initiated a series of talks presented before our meetings. The aim is to educate ourselves about pertinent issues, provide a forum for those involved in social justice to speak about their projects and to create projects that may arise from presentations.

In April, we were treated to a presentation by Ilana Pinshaw on The Abraham Fund, which aims to advance co-existence and equality between Jews and Arabs in Israel.

The history of relations between Jews and Arabs in Israel has been marked by prejudice and unequal treatment of Arab citizens. In 2000, the friction came to a head with demonstrations in solidarity with Palestinians and in protest against police violence. Police responded with live ammunition and left thirteen Arab-Israelis dead. Following a State Commission of Enquiry report, various initiatives were put into place to improve relations with Israeli Arabs. The Abraham Fund had been established in 1989, but this event changed the direction of the Fund towards a focus on education and training so that it has become the main Government sponsored organisation dealing with Israeli Arab relations.

As major cities become increasingly racially mixed, there is an urgent need to encourage peaceful and productive co-existence between Arabs and Jews in Israel. Unfortunately, the actions of the Israeli government and authorities in the past has not encouraged this, but instead created a climate of resentment and a diminishing participation in the political process by Israeli Arabs. The Fund is slowly improving that situation. Some of the key Fund initiatives:

- Developing the teaching of Arabic in schools (mainly in the North of Israel where 50% of the population are Arab-Israelis)
- Training and placing Arab teachers in schools
- Educating politicians and bureaucrats on Arab sensitivities and Jewish/Arab relations
- Establishing training for police to encourage more sensitive policing
- Running regional workshops that bring together Arabs and Jews,
- Promoting higher rates of employment, particularly amongst Arab women, to help combat poverty in the Israeli-Arab

community

- Providing grants to organisations who wish to establish programs that enhance co-existence
- Providing a centralised information service about Arab Israelis

There is a satellite 'Friends of the Abraham Fund' organisation based in England and the Fund is based jointly in Jerusalem and New York.

The Fund has a website at [www.abraham-fund.org](http://www.abraham-fund.org)

*Want to keep up with the latest news about your community?*

Check the TBI website

**[www.tbi.org.au](http://www.tbi.org.au)**

for our updated calendar, all our activities and for links to the Progressive Jewish world.

## Social Justice

GROUP



Some of the SJG members at the Feb meeting

## JOIN US!!

**All welcome!** Lots of initiatives to add your energy to, or initiate your own. Meetings every 6 weeks. For meeting dates, or for more info, contact John Hillel [johnhillel@yahoo.com.au](mailto:johnhillel@yahoo.com.au)

### Some current initiatives:

- |   |   |
|---|---|
| <input type="checkbox"/> Pen Pal (Prisons)            | <input type="checkbox"/> Telechat                   |
| <input type="checkbox"/> Aboriginal Community Liaison | <input type="checkbox"/> Soul Food                  |
| <input type="checkbox"/> Sacred Heart Mission         | <input type="checkbox"/> Refugee Projects (various) |
| <input type="checkbox"/> Family Violence              | <input type="checkbox"/> Anti-Poverty Week          |
| <input type="checkbox"/> Chessed Project (Eildon)     | <input type="checkbox"/> White Ribbon Day Promotion |
| <input type="checkbox"/> Sulha                        | <input type="checkbox"/> Liaison with JECO          |



## Limmud at TBI

Bookings and enquiries for all limmud and social programs on 9510 1488.



Photo: Reuben Urban

### LIMMUD ON SUNDAYS

Adult learning on Sundays, 10.30 am – 12 noon, with TBI rabbis and guest lecturers. Gold coin donation.

#### MODERN DISCOVERIES IN BIBLICAL ARCHEOLOGY

**12, 19, 26 July with Rabbi John Levi**

Three sessions on one of Rabbi Levi's favourite topics, biblical archeology.

#### THE BOOK OF DEUTERONOMY AND THE CONSTRUCTION OF A JEWISH PAST

**9, 16, 23, 30 August with Rabbi Fred Morgan**

Four sessions exploring the fifth book of Torah.

### ONGOING LIMMUD OPPORTUNITIES

#### INTRODUCTION TO JUDAISM

The next intake of this fascinating 12-month journey through Jewish history, culture, ethics and religion commences in July.

Entry is by interview with a rabbi only. If you are interested in participating in the coming intake, please call the office now to make a date to see one of the rabbis.

**Tel. 9510-1488**

#### TUESDAY TALK

**7, 21 July, 4, 18 Aug at 12 noon**

Join Rabbi Morgan on the 1st and 3rd Tuesday of every month for lively discussion on contemporary events in the Jewish world. BYO lunch. Gold coin for refreshments.

### SHERIDAN HALL SHMOOZE

Join Rabbi Morgan on the first Monday of every month at 2 pm for an informal shmooze on the current topics of the day, at Sheridan Hall. Non-residents are welcome to participate, at 6 Northcote Avenue, Caulfield. **6 July & 3 August**

#### COFFEE & CHAT WITH THE RABBI

**Weekly on Tuesdays during the Matan teaching term at 4:30 pm.**

Stop by TBI on your way home from work or school, or stay after dropping off your kids to Matan classes. Chat with the rabbis about current events, shul activities, religious issues or whatever is on your mind. No cost, refreshments available.

### HEBREW CLASSES: ALEF ISN'T TOUGH

**Beginners' Hebrew classes with Karen Rosauer, 10 Thursdays 6 Aug to 8 Oct at 7:30 pm**

You will be able to recognise all the letters and have a basic understanding of Hebrew word structures and an elementary vocabulary of key prayer terms.

### HEBREW CLASSES: ALEF ISN'T ENOUGH

**Intermediate Hebrew classes with Albert Bentata, Thursdays at 7:30 pm**

Building on the fundamentals to establish a more comprehensive understanding.

Dates of the next course on 9510-1488 or call Albert on 9555 2527

### MEN'S GROUP

An opportunity for Jewish men to gather for discussion on issues of concern. Meeting monthly in private homes, on **19 July & 23 August at 8 pm**. Contact Albert on 9555-2527 for details.

### NISHMAT COL CHAI MEDITATION

Jewish meditation, chanting, discussion on first Wednesday monthly with Eva Light in her home. Open to beginner and experienced meditators. **Contact Eva Light on [literate@bigpond.com](mailto:literate@bigpond.com) for details.**

### WORSHIP OPTIONS @ TBI

#### GESHER L'TEFILLAH

On the second Shabbat monthly at 9:45 am in the Magid Resource Centre, an intimate self-led gathering with Torah study instead of a sermon. All welcome. **11 July & 8 August**

#### NETZER-LED MINYAN

Netzer-led Shabbat service upstairs in the MRC on the first Friday monthly at 6:15 pm. Relaxed *kabbalat Shabbat* service, with guitar accompaniment for our brachot. Please join us **3 July & 7 August**

#### SHABBAT ALIVE!

On the fourth erev Shabbat monthly, welcome Shabbat with drums and cymbals, guitars, singing, vibrant rhythms and the energy of our *Junior Chazzanim!* **24 July & 28 August.**

#### SHABBAT MISHPACHA

A Shabbat service geared to young children up to grade 2 and their families on the second Saturday of each month. Shabbat mornings, 9–9:30 am in the Sanctuary with Rabbi Rayna Gevurtz. **11 July & 8 August**

#### YOUNG TBI DINNERS

Join a diverse group of younger TBI members on the fourth erev Shabbat monthly for a Shabbat meal. **24 July & 28 August.** Check Young TBI group on Facebook. No need to RSVP.

# Smachot

*Celebrating the milestones in our congregational family*

## NEW BABIES

*Mazal tov to these families who have welcomed new babies:*

- to **Daniel & Jenny Aghion** on the birth of their son, Benjamin Arthur Aghion; to Barbara and Derek Prissman, **Jack Aghion** and **Judy and John Margis** on the birth of their grandson; and to Eva Lehner and Asne Sessel on the birth of their great grandson!
- to **Dion and Amy Hershan** on the birth of their daughter, Eliza Hershan; and to **Robert & Yvonne Hershan** on the birth of their granddaughter
- to **Rhonda and Jeff Nirens** on the birth of their grandson, Zachary Brendon Mitchell. Best wishes to their daughter Rebecca and husband Frank Mitchell (in Ireland) on the birth of their son, and to Betty & Gerald Rosenberg on the birth of their great grandson.
- to **Charles and Kirsten Shaw** on the birth of their son, Freddie Edgar Shaw.
- to **Lara Snell-Bliss & Craig Snell** on the birth of their son, Rupert Snell-Bliss; and to **Phillip & Andrea Bliss** on the birth of their grandson
- to **Bronia & John Witorz**, on the birth of their grandson, Cooper Abe Crespin. Best wishes to their daughter Mia & husband Tait Crispin

## Correspondence

We welcome letters to the Editor from members and friends of the community.

### THANK YOU AND FAREWELL

To the members and friends of Temple Beth Israel

Please accept our grateful thanks for the function arranged on behalf of the Board that was prepared by Kathy Kaplan. I was uncomfortable being "up front" but it was such a nice Hamish function that I was made to feel comfortable.

I thank the Board for the wonderful gift Dianne and I were given, as well as our thanks to the past presidents and other representatives who both spoke and made presentations.

## SPECIAL BIRTHDAYS

*Mazal tov on celebrating a special birthday, 29 June – 1 August:*

- Armin Abish • Judy Becher • Mark Blatman • Hilda Brous • Fiona Carnes • Michael Cashmore • Steven Castan • Robert Danos • Edward Ekselman • Sara Finch • Naomi Fooks • Geoffrey Goldab • David Gordon • Erica Greenberg • Mietek Gringlas • Caroline Heard • Larry Hermann • Yvonne Hershan • Peter Isaacson • Simon Jakobovits • Monty Kleiman • Ken Klooger • Harry Krane • Betty Lesh • Bruce Levin • Beatrice Levy • Maria Lewit • George Leyland-Greaves • Anthony Marks • Rosalind McCarthy • Sam Moshinsky • Paul Nussbaum • Henry Philipp • Margaret Poll • Lisa Ravech • Ellie Rogers • Ashley Rosshandler • Jonathan Sandler • Lore Schenk • Marion Segal • Otto Shelton • James Silver • Jacqui Snider • Cheryl Spivakovsky • Rose Stach • Alex Starr • Anthony Stern

## JUNE & JULY B'NEI MITZVAH

*Mazal tov to families celebrating b'nei mitzvah:*

- Jamie Moshinsky (20 June) • Sophie Fink (18 July) • Charlotte & Saul Churcher (1 August)

Our family was overwhelmed by the attendance and the notes of appreciation which have been placed in a great memento book. It is something we will always treasure.

Please accept my sincere thanks for your kind wishes and donations to the PJCF and Impact for Women made on the occasion of my retirement.

Thank you once again for allowing me the opportunity of serving this congregation and I am sure I will see you in shule or around town from time to time.

DIANNE AND ALAN SAMUEL

## SPECIAL ANNIVERSARIES

*Mazal tov on their wedding anniversaries, 29 June – 1 August:*

- Philip & Debra Dalidakis (5th) • Simon & Nelly Vagana (5th) • Gail Simons & Richard Swansson (15th) • Mark and Alla Medownick (15th) • Charles & Janice Hackman (35th) • Emile & Kathy Rochman (35th) • Richard & Margot Melzak (50th) • Jamie & Marlene Sacks (55th)

## RECENT BA'ALEI KRIYAT TORAH

*Thank you to our Torah leyners who chanted Torah for us 10 May – 20 June:*

Yael Appelboom, Jeremy Bader-McDowell Tammy Cohen, Danielle Cohen, Damien Green, Rhondda Hall, Sam Heselev, Sabrina Lewis, Effi Morawetz, Simon Morawetz, Rabbi Fred Morgan, Jamie Moshinsky, Daniel Orbach, Yoko Ryan, Orit Sidelman, Leya Snider, Sheryl Topol

If you would like to leyn Torah on Shabbat, call Rhonda Nirens on 9510-1488 to arrange a date. We will provide all the support you need to ensure you are confident and prepared.

## Bereavements

בְּרִי

*We remember these recently deceased and offer sincere condolences to their families:*

- **Betty Broons** (mother of Barry) • **Louis Dunn** • **Reginald Elliot** (father of Denise Joyner) • **Leslie Gross** • **Charlotte (Lolo) Jackson** (mother of Frank & Ron) • **Benjamin Kinst** (father of Krystyna Kynst) • **Helen Lipp** (sister of Leo Lipp) • **Heather Lustig** • **Henry Mitchell** (husband of Stella, father of Tony & Julian) • **Liselotte Nassau** (mother of Dennis) • **Eugenie Orbach** (mother of Nathan, grandmother of Anna, David, Julia, Daniel & Jonah) • **Alexander Joy** • **Alice Shafer** (mother of Vivian Goldwasser & Gary Shafer) • **Taj Spencer** (son of Tahlil and Michael Spencer, grandson of Pauline & Shaun Rockman and nephew of Jordana & Diego Bekinstein) • **Helen Weisskirch**
- May their memories be a blessing.*

*All yahrzeits are recorded on the weekly Shabbat synagogue supplement.*

# Donations to support our congregation

*With thanks for your generous donations received 24 April – 10 June 2009*

## TBI GENERAL FUND

• Simon & Skye Abraham • Basil Arkles • Corinne Bader • Peter Bader • Linda Bader & Colin McDowell • Victor Barnes • Paul & Eve Bartrop • Phillip & Sandy Benjamin • Judy Bennett • Albert & Carol Bentata • Henry & Raquella Birner • Sue Blashki • Andrea Bliss • Miranda Bliss • Philip & Andrea Bliss • Mr & Mrs H Boon • Raissa Borovik • Yakov & Raissa Borovik • Arnold & Mary Bram • Noah Brand • Moris Braun • Hilda Brous • Joseph & Estelle Brown • Max & Nora Bruch • Valda Bruder • Dianne Burman • Halina Chazan • Jessica, Rebekah & Michael Chereshtsky • Sam Chizik • Peter Cohen • Peter & Mirri Curtis • Andrew Davis • Bunty Davis • Howard Davis • Marie Davis • George & Marlene Dryen • Kevin & Andrea Eisfelder • Max Esser • Abrasha Feigin • Max & Pat Fink • Lisa Finkelstein • Mr & Mrs S Fookes • David Freedman • Vera Freidin • Max Fremder • Graham Friedman • Rosemary Friedman • Helena Frosh • Carmen Gartenmann • Roger & Jan Goldsmith • Frank & Fliss Goldstein • Tom & Jenny Gorog • Jack & Katie Gould • Liselotte Graetzer • Geoffrey Green • Danielle Gross • Felicity Guthrie • Mary Harber • Jeffrey Harrison & Heike Schwarz • Eleanor Hart • Caroline Heard • Gary & Susan Hearst • Leslie Heine • Jeremy Hershan • Eric & Rhona Herz • Ian Heyman • Dorothea Heymann • John Hillel • Sandra Horowitz • Ronald Hurwitz • Ronald Hurwitz • Magdi Jakobovits • Ivan Jarny • Emelie Josephs • Emelie Josephs • Peter Kahan • Fay Kayser • Suzanne Kimmel & Alan Lang • Izak Kiven • Monty & Leila Kleiman • Edith Kohn • Peter & Barbie Kolliner • Alan Kozica • Sam & Gertie Langer • Hal & Roslyn Levy • Philip Levy • N Migdalek & Kate Lewis • Ross Liebmann • Eva Light • Helen Light • Margaret Llewellyn • David Irons & Joanne Loewy Irons • Lewis & Eve Lustig • Ray & Daniele Magid • Jonathan Mahemoff • Ernie & Malvina Malinek • Marietta Manders • Brian & Jeanette Mandie • Richard Margolis • Bernard & Wendy Marin • Eve Markov • Stan & Eva Marks • George & Danuta Mendelson • Mark Mochinsky • Evi Morawetz • Eddie Moses • Jamie Moshinsky • Randall & Natalie Moshinsky • Richard & Romy Moshinsky • Sam & Ada Moshinsky • Thomas Moshinsky •

Theo Moss • Elaine Nassau • David Nathan • Paul & Dorothy Nathan • Evi Nelson • Fay Nussbaum, Mary Dunn & Paul Nussbaum • Klaus Oppenheimer • Miriam Orbach • Nathan & Marian Orbach & Family • James Orloff • Ben Oshlack & Paul Friedman • Brian & Marylin Parkin • Boris Petukhov • Margaret Poll • Lisa Pomeroy • Mr & Mrs D Pomeroy • Mark Pomeroy & Clare Devine • S Pomeroy & H. Lederman • Irene Popper • Barbara Quinn • Greta Redlich • Irvin Rockman • John & Margot Rogers • Ken & Ruth Rossdale • Ashley & Jennifer Rosshandler • Pamela Ruskin • Adam & Yoko Ryan • Martha Sanders • Morel & Lala Saunders • Ronnie & Ofer Sayag • Marion Segal • Hedy Setton • Sharon Shafer • Ron & Evelyn Sharp • Morris & Helen Sher • Efim & Manya Shmukler • Rebecca Silk • David & Anthea Slater • Norman & Sue Sonenberg • Catherine Soveny • Rodney & Aviva Taft • John & Tanya Tescher • Alice Tiomkin • Lorraine Topol • Eric Trainor & Janette Zalzman • Reuben & Pat Urban • Simon & Nelly Vagana • Manya Van Aken • Joy Waller • Mark Weis & Stefanie Jones • Eva Weisl • Trude Wieder • Gloria Wieselmann • Ilse Ziffer •

## PROGRESSIVE JEWISH CULTURAL FUND (TAX DEDUCTIBLE)

• Edward M Alpert • Eden Altman & Nina Cottman • Frank & Deany Arnheim • Richard Asznovicz • Erika Bence • Jean Berah • Philip & Andrea Bliss • Debra Bloom • David & Paula Bloom • Arnold & Mary Bram • Dorothy Bresner & Evelyn Bresner • Dianne Burman • Marlis Cohen • Mervyn & Leila Cohen • Howard Davis • Frank Durra • Graham & Stella Edgar • Joseph & Janice Epstein • Anne Felder • Max & Pat Fink • Jeremy & Barbara Frank • Sue Freadman • David & Katarina Freedman • Howard & Lorraine Freeman • Kurt & Inge Friedlaender • Roger & Jan Goldsmith • Ursula Goldstein • Liselotte Graetzer • Dorothy Graff & Felix Wyss • Felicity Guthrie • Samuel & Sharene Hambur • Gary & Susan Hearst • Robert & Yvonne Hershan • Ross & Monica Hyams • IT • Andrew & Penny Jakobovits • Alwynne Jona • Stefanie Jones • Lili Kiffer • Peter & Barbie Kolliner • Mark Landau & Shanaz Cassim • Michael & Lyn Lawrence • Leo Baeck Centre • Peter & Jenny Levi • Rabbi

John Levi & Robyn Levi • Maria Lewit • Joe Lewit & Ruja Varon • Larry & Helen Light • Mark & Kelly Lippmann • Margaret Llewellyn • Jeffrey & Violet Loewenstein • Peter & Carole Loewy • Charlotte Lubin • Lyn Lutchner • Marietta Manders • John Mansfield • Anthony & Ruth Marks • Alan & Esther Michael • George & Ruth Mihaly • Rabbi Fred & Sue Morgan • Mr & Mrs R Nakhamkes • Justice Howard Nathan • Paul & Dorothy Nathan • Marlo Newton & Tal Spinrad • Paul Oppenheimer & Sophie Glaysher • Nathan & Marian Orbach • Grete Pearce • Werner Philipp & Lotti Eisinger-Philipp • Hanna Popiolek • Bronia Raynor • Daniel & Neomy Reuben • Adam & Yoko Ryan • Joshua & Karen Samuel • Michael & Sally Schonfeld • Mim Segal • Bella Shannon • Charles & Kirsten Shaw • Ruth Siegel • Colin & Sue Silver • Sarah Simon • Maurice Slonim • Oscar Sokolski • Pinchas Tidor • John & Sally Unglik • Reuben & Pat Urban • Judith Varlamos • Joy Waller • David & Rosette Wittner • Simon Wollan & Arianna Wilson • Lewis & Deborah Woolf • Agnes Ziltzer • Albert & Ziona Zylberman

## COUNCIL FOR RELIGIOUS EDUCATION IN SCHOOLS (TAX DEDUCTIBLE)

• David & Jenny Arkles • Arthur & Bina Best • Jacob Boon & Jude Bade-Boon • Henry & Betty Drillich • George & Marlene Dryen • Judi Dubiner • Max Esser • Fleur Freadman • Vera Freidin • Joseph & Sonia Freidin • Dorothy Graff & Felix Wyss • Rita Greiner • Felicity Guthrie • David & Sharon Hamilton • Sharon & Daryl Herbert • Ian Heyman • Norman & Sabine Heymann • Ronald Hurwitz • Marilyn Hyams • Joshua & Minnie Kahan • George & Yolanda Klempfner • Marian Lawrence • Amit & Emma Levy • Eve Markov • Geoff Markov & Jillian Burnett • Roger & Sue Mendelson • George & Ruth Mihaly • Inge Mohrer • Ian Moore • Marta Mote • Klaus Oppenheimer • Grete Pearce • Edith Peer • Rose Rosta • Saul & Lauren Ryan • Ian & Shayndel Samuel • Brian & Jenny Samuel • Michael & Sally Schonfeld • Bella Shannon • Rose Stach • David & Lynda Tepper • Manya Van Aken • Lionel & Dianne Werbeloff

# July-August 2009 at TBI

SUNDAY	MONDAY	TUESDAY	WEDNESDAY	THURSDAY	FRIDAY	SATURDAY
<p><b>6 Tammuz</b></p> <p>10:30 am Limmud on Sundays 'Land, symbolism and Jewish identities' with Miriam Feldheim</p> <p><b>June 28</b></p>	<p><b>7 Tammuz</b></p>	<p><b>8 Tammuz</b></p> <p><i>No Matan</i> <i>No Coffee with the Rabbi</i> 7:30 pm Introduction to Judaism</p> <p><b>30</b></p>	<p><b>9 Tammuz</b></p> <p>11 am Friendship Club</p> <p><b>1 July</b></p>	<p><b>10 Tammuz</b></p>	<p><b>11 Tammuz</b></p> <p>6:15 pm Erev Shabbat service 6:15 pm Netzer-led alternative minyan</p> <p><b>3</b></p>	<p><b>12 Tammuz</b></p> <p><b>Shabbat Chukat Balak</b></p> <p>10 am Shabbat Shacharit service Celebrating Rabbi Fred Morgan's 25th Anniversary of Ordination with a special full kiddush to follow the service.</p> <p><b>4</b></p>
<p><b>13 Tammuz</b></p> <p><b>3 pm In Conversation: Rabbi Fred Morgan and Rachael Kohn</b></p> <p><b>5</b></p>	<p><b>14 Tammuz</b></p> <p>2 pm Sheridan Hall Shmooze</p> <p><b>6</b></p>	<p><b>15 Tammuz</b></p> <p><i>Netzer winter camp commences</i> <i>No Matan</i> <i>No Coffee with the Rabbi</i></p> <p>12 noon Tuesday Talk 7:30 Introduction to Judaism</p> <p><b>7</b></p>	<p><b>16 Tammuz</b></p> <p>10:30 am Drop In &amp; Chat/ Knitting Circle 12 noon TBI Hostess Luncheon</p> <p><b>8</b></p>	<p><b>17 Tammuz</b></p> <p>7:30 pm TBI Board meeting</p> <p><b>9</b></p>	<p><b>18 Tammuz</b></p> <p>6:15 pm Erev Shabbat service</p> <p><b>10</b></p>	<p><b>19 Tammuz</b></p> <p><b>Shabbat Pinchas</b></p> <p>9 am Shabbat Mishpacha (Sanctuary) 9:45 am Geshet service (MRC) 10 am Shabbat Shacharit service</p> <p><b>11</b></p>
<p><b>20 Tammuz</b></p> <p>10:30 am Limmud on Sundays: Rabbi John Levi presents the first of three sessions on one of his favourite subjects, archeology in the Holy Land.</p> <p><b>12</b></p>	<p><b>21 Tammuz</b></p>	<p><b>22 Tammuz</b></p> <p>4 pm Matan Hebrew and Jewish Studies classes 4:30 pm Coffee with the Rabbi 7:30 pm Introduction to Judaism</p> <p><b>14</b></p>	<p><b>23 Tammuz</b></p> <p>11 am Friendship Club 7:30 pm Women's Rosh Chodesh group meeting (private home)</p> <p><b>15</b></p>	<p><b>24 Tammuz</b></p>	<p><b>25 Tammuz</b></p> <p>6:15 pm Erev Shabbat service with Ruach choir</p> <p><b>17</b></p>	<p><b>26 Tammuz</b></p> <p><b>Shabbat Mattot Masei</b></p> <p>10 am Shabbat Shacharit service with Ruach choir Batmitzvah of Sophie Fink</p> <p><b>18</b></p>
<p><b>27 Tammuz</b></p> <p>10:30 am Limmud on Sundays: Rabbi John Levi on archeology in the Holy Land.</p> <p>8 pm Men's Group meeting (private home)</p> <p><b>19</b></p>	<p><b>28 Tammuz</b></p>	<p><b>29 Tammuz</b></p> <p>12 noon Tuesday Talk 4 pm Matan Hebrew and Jewish Studies classes 4:30 pm Coffee with the Rabbi 7:30 pm Introduction to Judaism</p> <p><b>21</b></p>	<p><b>1 Av 5769</b></p> <p>10:30 am Drop In &amp; Chat/ Knitting Circle</p> <p><b>22</b></p>	<p><b>2 Av</b></p>	<p><b>3 Av</b></p> <p>6:15 pm Shabbat Alive! Service with our Junior Chazzanim 7:30 pm Young TBI dinner</p> <p><b>24</b></p>	<p><b>4 Av</b></p> <p><b>Shabbat Chazon Devarim</b></p> <p>10 am Shabbat Shacharit service with TBI Choir</p> <p><b>25</b></p>
<p><b>5 Av</b></p> <p>10:30 am Limmud on Sundays: Rabbi John Levi on archeology in the Holy Land.</p> <p><b>26</b></p>	<p><b>6 Av</b></p>	<p><b>7 Av</b></p> <p>4 pm Matan Hebrew and Jewish Studies classes 4:30 pm Coffee with the Rabbi 7:30 pm Introduction to Judaism</p> <p><b>28</b></p>	<p><b>8 Av</b></p> <p><i>Erev Tisha B'Av (fast begins)</i></p> <p>7 pm VUPJ Tisha B'Av shiur and service (Friedlander)</p> <p><b>29</b></p>	<p><b>9 Av</b></p> <p><i>Tisha B'Av Fast Day</i></p>	<p><b>10 Av</b></p> <p>6:15 pm Erev Shabbat service with Kol Simcha choir</p> <p><b>31</b></p>	<p><b>11 Av</b></p> <p><b>Shabbat Va'etchanan</b></p> <p>10 am Shabbat Shacharit service B'nei mitzvah of Charlotte &amp; Saul Churcher</p> <p><b>1 August</b></p>
<p><b>12 Av</b></p> <p>2 pm Launch: TBI TWELVE Art Calendar 3 pm Art Auction</p> <p><b>2</b></p>	<p><b>13 Av</b></p> <p>2 pm Sheridan Hall Shmooze 7:30 pm Dementia Support Group meeting</p> <p><b>3</b></p>	<p><b>14 Av</b></p> <p>4 pm Matan Hebrew and Jewish Studies classes 4:30 pm Coffee with the Rabbi 7:30 pm Introduction to Judaism</p> <p><b>4</b></p>	<p><b>15 Av</b></p> <p>11 am Friendship Club</p> <p><b>5</b></p>	<p><b>16 Av</b></p>	<p><b>17 Av</b></p> <p>6:15 pm Erev Shabbat service (Sanctuary) 6:15 pm Netzer-style alternative minyan - all welcome (MRC)</p> <p><b>7</b></p>	<p><b>18 Av</b></p> <p><b>Shabbat Ekev</b></p> <p>9 am Shabbat Mishpacha (Sanctuary) 9:45 am Geshet alternative minyan (MRC) 10 am Shabbat Shacharit service (Sanctuary)</p> <p><b>8</b></p>

the Arts Centre presents

# MAYUMANNA

HIGH-ENERGY ENTERTAINMENT

*"So much fun!"*

Variety, USA

*A pulsating mix of beat,  
music and movement  
direct from Tel Aviv*

22 – 25 July  
Exclusively at the Arts Centre

Ticket prices \$39 - \$79  
Family of 4 \$149  
(includes minimum 2 children under 16)  
Group tickets also available

**BOOK NOW!**

[theartscentre.com.au](http://theartscentre.com.au)

or 1300 136 166

transaction fees apply



[theartscentre.com.au](http://theartscentre.com.au)

the Arts Centre  
MELBOURNE